

Purpose:

1. Plan the shoot.
2. Get Input from possible models, MUAs
3. Figure out the required lighting, staging, props etc before hand.

When

On a day which works for us all in July -when I can book the studio.

The Studio

I am planning to use Peter House's studio in Mississauga for this shoot. See for location etc. <http://studiobyhouse.com/>

How this Works:

This is a "Let's try it and see" shoot.

Have a look at each of the picture(s) below and let me know which appeal to you most.

We will use them as "inspiration" for our shoot. The idea is not simply to "repeat" them, but to use them as inspiration for what we can do, given the props we have, the makeup we have. and the dresses, hats etc that we can come up with.

I want to do 2 sessions. One with a model with light skin and hair, and a second with a model with dark skin and hair. I am looking for two folks who want to be the models. Each session will last about 90 minutes. We will schedule the start time for each.

What You Give and What You Get

Give

- Your time and talent –
- Your ideas
- The clothing you wear during the shoot (wardrobe)
- A commercial model release

Get

1. The ability to pick your favorites from some of these out of the shoot portfolio (on Pixieset)
2. 5 to 10 final images, high res and low res jpegs - for you non-commercial use
3. A photo essay of 10 to 20 of the shots from your shoot that you can use in your portfolio for casing purposes etc see <http://www.digitaleye.photo/#1> for a sample

4. Credit for you as the model in any promotional postings that I do on the Internet
5. \$25 cash to cover any travel expenses you may have
6. A fun and intriguing shoot with a collaborative photographer
7. 20% of royalties if any of these images sell in the first year after the shoot

I

Inspiration

Joel Grimes

here are two videos which talk about this look

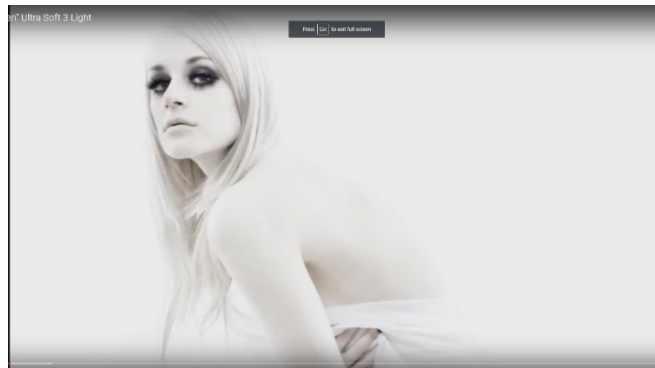
<https://fstoppers.com/education/joel-grimes-shows-how-create-super-soft-images-one-light-51707>

and

https://www.youtube.com/watch?v=bB0V_Rucdlq&list=PLD6E7293A13B2CE2C&index=8

Session One – White In White Light





This start to take us to the limits since there is a lot of makeup involved in this shoot.
The previous shots are all natural skin tones.



Lighting

Two 7 foot white umbrellas with bounce through lighting- one to each side

1 white 5 foot white diffused parabolic umbrella with diffuser in the front in Paramount position

White walls or white V Flats on each side

White sweep as background

Props, Wardrobe and Makeup

No props – except perhaps large simple white or black jewelry with a sheen to create catchlights and possibly white head shawl or a large white hat for some of the shots.

Hair – long or short – but light, light is best for this session -almost white

Look One: White clothing

Possibilities

1. White form-fitting body suit or tank top and leotards
2. White caftan or loose draping dress over the white clothing in 1 above if it is translucent or sheer
3. White slacks with white high heels and white tailored blouse

Look Two:



1. Same type of wardrobe in black

Makeup

The lighter the hair color the better

Eyes made up to create contrast – dark colors – dark long lashes etc

Pale lipstick or black lipstick or dark red lipstick

The makeup working in this light makes these shots.
Equally balanced on the face and shoulders is key.
The eyes and intensity of the look make this shoot.

See the inspiration shots above.

One possibility to consider is a dark green or blue look in the make up

Session One – Dark In White Lighting



The first shot here shows this ultra super soft white light with a model with dark skin. The next shots are not the same lighting but are just there to indicate possible skin tones for the subjects in this session.





Lighting

Same as before.

Props, Wardrobe and Makeup

No props – except perhaps large black jewelry with a sheen to catch the catch light and a sheer black shawl or a large black hat.

Hair – long or short – but dark – black best for this session -

Black clothing

Possibilities

1. Black form fitting body suit or tank top and leotards
2. Black loose draping dress over the black clothing in 1 above if it is translucent or sheer
3. Black slacks with black high heels and black tailored blouse

Or

Second variation

The white clothing outlined in session one

Makeup

The darker the hair color the better

Long or short but as natural as possible

The eyes and intensity of the look make this shot.
The eyes are cleanly made up

Possible Ward Robe variation

One possible variation for both sessions is to go all dark green or dark blue in the ward robe, depending on how flattering these colors are to the subject.

The ultra soft white light should “tone down” the color of these outfits. Again, simple classic clean clothing lines will work best for this shoot. In this option, match the eye makeup and lipstick to the clothing color.